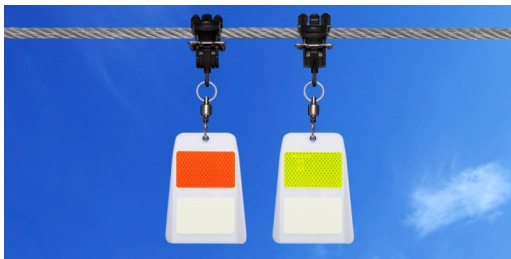


FireFly® FF Bird Diverter



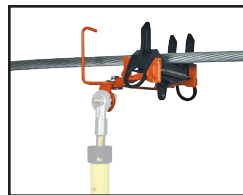
FireFly FF bird diverter



FireFly FF front and back



Opening the SnapFast clamp



Push to snap closed (tool sold separately)



FireFly FF can be installed by helicopter

Recommended by the U.S. Fish and Wildlife Service, patented FireFly bird diverters have been shown in independent studies to be the most effective bird diverters in preventing bird strikes on power lines.

Incorporating motion, reflectivity, and glowing light, FireFly FF bird diverters are a highly effective and proven solution for protecting birds in flight from collisions with overhead power lines, guy wires, communications towers, and other thin profile obstructions. FireFly FF can also be used to haze birds within a 30 foot radius from buildings and structures.

FireFly FF is also cost effective, with a lower installed cost than coils. Furthermore, coils can entangle birds and are less effective diverters, especially in low light at dawn and dusk.

FireFly FF Makes Hazards Visible to Birds

- Developed by an avian biologist and based on avian research.
- Spins in 3+ mph winds, increasing visibility for migrating birds and bats. Uses a heavy duty, stainless steel ball bearing swivel that is resistant to salt spray and adverse weather conditions.

NOTE: For very high sustained winds, FireFly HW with no moving parts (no swivel) should be used.

- Research at Cornell University shows that birds can see both visible and ultraviolet light. FireFly is highly visible to birds in both the parts of the spectrum.
- Diamond bar material refracts sunlight and provides a "sparkle effect" visible to birds up to a quarter mile away.
- Luminescent material emits visible light for up to 12 hours after dusk, and in low light or fog conditions, when birds are most vulnerable.
- Impact resistant and UV-stablized acrylic "flapper" is 3.5" x 6", 1/8" thick, and rated for temperatures from -30 F to 160 F.

Fast and Simple Installation

- FireFly installs in seconds on live lines up to 115 kV by hand, hot stick, or helicopter. Also safe to use on OPGW lines.
- FireFly is easy to remove and install as bird activity changes with the season.
- Recommended spacing is 30 feet between FireFly diverters.
- Patented and rugged SnapFast mounting clamp prevents line slippage on single or bundled cables. Choose from two sizes: 10-70 mm (0.39"-2.75") P/N #FF-SF10-70
4-16 mm (0.16"-0.63") P/N #FF-SF4-16